

Major New Product of National Level

The only enter prise in Asia implementing German DIN Standard



AUTO-DARKENING WELDING HELMET

NO DAZZLING BUT SHINING

INSTRUCTIONS FOR USE



SOLAR POWER AUTO-DARKENING HELMET TYPE

Features

- Sensitivity stepless adjustment regulation
- Variable shade adjustment DIN 9—13
- Automatic light adjustment from light to dark state in less than 0.1 milliseconds
- Viewing area 90mm×42mm
- Automatic power on/off
- Adjustable headband
- light weight and neck protection
- Conforms to CE standards



Suitable for

- most welding applications
Please refer to the Shade Guide Table.
- Also suitable for grinding, oxy/acetylene welding and outing.

1

Technical Specifications

| | |
|-----------------------------|--|
| Shade Number in Light State | DIN4# |
| Shade Number in Dark State | DIN9-13#(outside stepless regulation) |
| Response Time | <0.1 milliseconds (room temperature) |
| Return Time | rapid-0.1s slow-0.5s |
| Power Supply | Solar cells & Lithium battery, after removing the lens assembly, locates the two battery compartments on the lens and removes the old batteries. Replace with CR2330 lithium type batteries. |
| Working Temperature | -5°C(23°F) to +55°C(131°F) |
| Viewing Area | 90mm×42mm |
| UV Transmittance | 313nm<0.00006% 365nm<0.000076% |
| IR Transmittance | 780-1300nm<0.003% 1300-2000nm<0.009% |
| Weight | 530g |

2



WARNING

Not suitable for welding applications requiring higher than DIN 13 shade protection.

This welding helmet is designed to protect the eyes and face from sparks, spatter and harmful radiation under normal welding conditions.

They will only protect against medium impact hazards. It does not protect against explosive devices or corrosive liquids.

Eye protection such as spectacles or goggles should be used where appropriate.

Failure to follow the operation instructions and maintain equipment in good working condition will reduce the performance of this product and could lead to permanent eye injury.

Thank you for your purchase of this auto darkening welding helmet.

Auto darkening welding helmets are designed to protect eye and face from sparks, spatter and harmful radiation under normal welding conditions. The auto darkening filter automatically changes from light state to dark state when the arc is struck, and it returns to the light state when welding stops.

The auto darkening helmet uses high performance solar cells as power supply.

Li-battery is required as power back-up. This product will automatically turn off after 15 minutes of no use. This will extend the life of the batteries.

Instructions for use

1. Tear of the protective film on the inside and outside surfaces of the lens.

2. Sensitivity stepless adjustment.

I –Lowest state

Lens does not darken in normal luminance. Available for the work environments that do not exist damages from strong lights such as grinding, acetylene welding and cutting.

II –Low state

Lens can not darken even if there are existing disturbing lights. Available for the work environments that several welders working together at the same time. It can effectively eliminate mistaken darkens.

III –Recommended Sensitivity State

Lens can work normally. Available for the work environment of single welding operation, abundant luminance and without any extra interferential flashes.

IV –High state

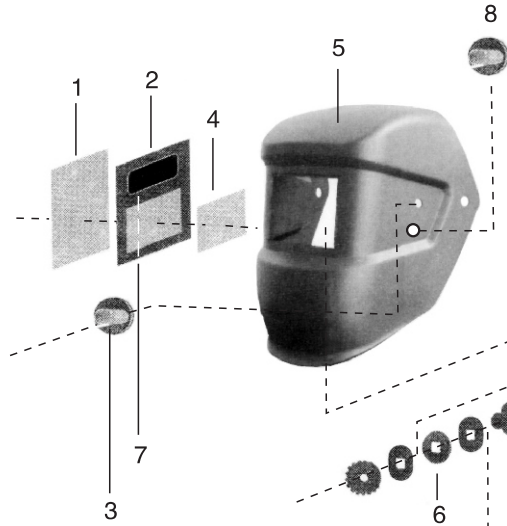
Lens can still work in the environment of un-abundant luminance and weak flashes. Available not only for the case of weak luminous inside and outside the workroom, but also available for applications that need to work at a long-distance from the light source.

3. Adjust the shade setting to suit your welding application by turning the variable shade knob to the required setting. Refer to the shade guide table on the back page.

4. Adjust the response time to suit your welding application by selecting slow(0.5s) or fast(0.1s) on the selector switch located on the inner face of the filler cartridge.

5. Adjust the headband so that the helmet is seated as low as possible on the headband close to your face. Loosen the lock nut on the right side of shield to allow for a finer adjustment of the viewing angle of the filter screen.

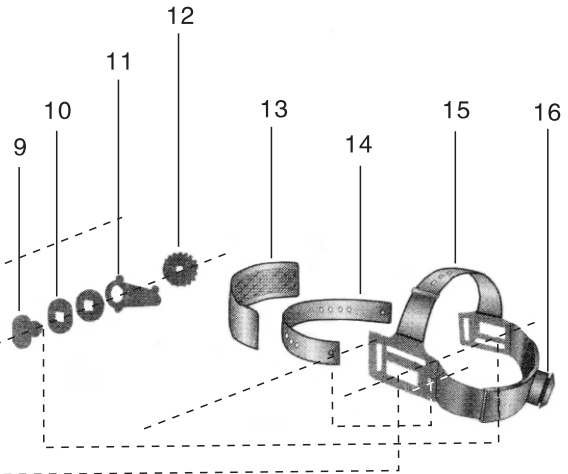
COMPLETE HELMETS & LENSES



- 1. Outside Protection Plate
- 2. Lens
- 3. Potentiometer Knob
- 4. Inside protection Plate
- 5. Shell(Welding Mask)
- 6. 2xRound Washer
- 7. Time-delay Return Switch
- 8. Sensitivity

5

(SHADE SETTING INSIDE OR OUTSIDE)



- 9. 2xSlid-bar
- 10. 3xSquare Washer
- 11. Adjustable Limitation Washer
- 12. 2xBlock Nut
- 13. Sweatband
- 14. Front Headband
- 15. Adjustable Headband
- 16. Adjustable Knob

6

Cleaning and Maintenance

1. Inspect all operating parts before use for signs of wear or damage.

Any scratched, cracked, or pitted parts should be replaced immediately before using to avoid severe personal injury.

2. Clean the filter lens with a clean lint-free tissue or cotton cloth.

3. Never immerse the lens in water or any other liquid. Never use abrasives, solvents or oil based cleaners.

4. Use warm soapy water to clean the headband.

5. Never try to open the filter cartridge or remove it from the helmet.

Specification and performance related information for this product may be changed without notice.

As this is beyond the control of Superpro, it is therefore the obligation of the user to determine the correct selection and safe use of this product.

Any liability that may occur as a result of the use or failure of this product is limited to the cost of repair or replacement of the failed product.

Trouble Shooting

| Problem | Solution |
|--------------------------------|--|
| Falls to darken flickers | Check cover lens for dirt or Damage (Clean or replace cover lens) Sensors are dirty(Clean sensors' surface) Welding current is too low(Adjust the response time switch to slow position) |
| Irregular darkening or dimming | Adjust headband and helmet angle to ensure an even distance between the eyes and the filter lens |
| Slow response | Operating temperature is too low(Do not use below -5°C or 23°F) |
| Poor vision | Front/inside cover lens and/or filter are dirty(clean cover lens and filter) Ambient light is insufficient Shade setting is incorrectly set(Reset the shade setting) |
| Welding helmet slips | Adjust headband properly |

Warranty

The manufacturer warrants making replacement for the period of 3 months and repairs free of charge for the period of 12months after the sale of the product to the buyer due to the product defects not resulting from products misuse or abuse. Any quality problem happens, please mail the product or part of product along with this card to our company, so that We can provide the best service for you.

NOTE: All specifications and technical data subject to change without prior notification.

Attached Table I

Recommended Shade Number According to BS679 and EN169

| Welding Process | Arc Current (Amperes) | | | | | | | | | | | | | | | | | | | | | | | |
|---------------------|-----------------------|---|-----|---|----|----|----|----|----|----|----|-----|-----|-----|-----|-----|-----|-----|-----|-----|-----|-----|-----|-----|
| | 0.5 | 1 | 2.5 | 5 | 10 | 15 | 20 | 30 | 40 | 60 | 80 | 100 | 125 | 150 | 175 | 200 | 225 | 250 | 275 | 300 | 350 | 400 | 450 | 500 |
| SMAW | | | | | | | 9 | 10 | | 11 | | 12 | | 13 | | 14 | | | | | | | | |
| MIG(hcavy) | | | | | | | | 10 | | 11 | | 12 | | 13 | | 14 | | | | | | | | |
| MIG(light) | | | | | | | | 10 | | 11 | | 12 | | 12 | | 14 | | 15 | | | | | | |
| TIG,GTAW | | | | | 9 | | 10 | | 11 | | 12 | | 13 | | 14 | | | | | | | | | |
| MAG/CO ₂ | | | | | | | | 10 | | 11 | | 12 | | 13 | | 14 | | 15 | | | | | | |
| SAW | | | | | | | | | | 10 | | 11 | | 12 | | 13 | | 14 | | 15 | | | | |
| PAC | | | | | | | | | | | | 11 | | 12 | | 13 | | | | | | | | |
| PAW | 2.5 | 3 | 4 | 5 | 6 | 7 | 8 | 9 | 10 | 11 | 12 | 13 | 14 | 15 | | | | | | | | | | |

Adopt greater or smaller shade number pursuant to the field condition

Not suitable for welding applications requiring higher than DIN 13 shade protection.

This welding helmet is designed to protect the eyes and face from sparks, spatter and harmful radiation under normal welding conditions.

They will only protect against medium impact hazards. It does not protect against explosive devices or corrosive liquids.

Eye protection such as spectacles or goggles should be used where appropriate.

Failure to follow the operation instructions and maintain equipment in good working condition will reduce the performance of this product and could lead to permanent eye injury.

Thank you for your purchase of this auto darkening welding helmet.

Auto darkening welding helmets are designed to protect eyes and face from sparks, spatter and harmful radiation under normal welding conditions. The auto darkening filter automatically changes from light state to dark state when the arc is struck, and it returns to the light state when welding stops.

The auto darkening helmet uses high performance solar cells as power supply.

Li-battery is required as power back-up. This product will automatically turn off after 15 minutes of no use. This will extend the life of the batteries.